



GPL series

GPL 12750 12V 80AH



Valve Regulated Lead Acid Battery

Maintenance-Free Sealed Lead Acid Battery.
Absorbent Glass Mat (AGM) technology for efficient gas recombination of up to 99%.

Design for Standby Power Applications

【Design Life】

Up to 10 Years in Standby Service at 25°C
Eurobat (20°C) : 10-12 years, Long Life

【Operating Temperature Range】

Nominal Operating Temperature : 25°C (77°F)
Discharge : -15°C ~ 50°C (5°F~122°F)
Charge: -15°C ~ 40°C (5°F~104°F)
Storage: -15°C ~ 40°C (5°F~104°F)

【Float Charging Voltage】

13.5 ~ 13.8 VDC/Unit at 25°C (77°F)

【Equalization Charging Voltage】

14.4 ~ 15.0 VDC/Unit at 25°C (77°F)

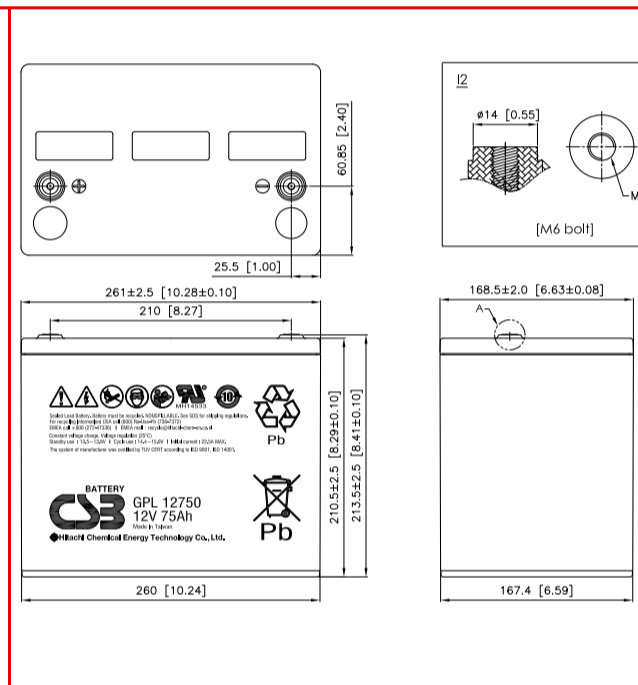
【Self Discharge】

Less than 10% after 90 days, can be stored up to 6 months at 25°C (77°F);
Fully recharging is required before usage, and charged sooner if stored at higher temperature than 25°C (77°F).

Specification

Design according with IEC 60896-21/22: 2004

Nominal Voltage	12V (6 cells per unit)	
Nominal Capacity	80 Ah @20hr-rate to 1.75V per cell @25°C (77°F)	
Weight	Approx. 25.60 Kg (56.42 lbs)	
Maximum Discharge Current	800A (5sec)	
Internal Resistance	Approx. 4.0mΩ	
Short Circuit Current	1933A	
Maximum Charge Current	22.50A	
Terminal type	I2 thread lead alloy terminal to accept M6 bolt	
Terminal hardware Torque	138.6 Kgf-cm/ 120.3 lbf-in/ 13.58 N-m	
Container Material	PP (UL 94-HB) & Flame Retardant (94-V0) available upon request	
Dimensions	Length (L)	261.0±2.5 mm 10.28±0.10 inch
	Width (W)	168.5±2.0 mm 6.63±0.08 inch
	Container Height (h)	210.5±2.5 mm 8.29±0.10 inch
	Overall Height (H)	213.5±2.5 mm 8.41±0.10 inch



Constant Current Discharge Characteristics Unit: A (25°C, 77°F)

F.V/Time	5MIN	10MIN	15MIN	30MIN	60MIN	90MIN	2HR	3HR	5HR	8HR	10HR	20HR
1.60V	298	198	149	87.5	53.5	38.8	30.9	23.4	14.5	9.57	7.85	4.15
1.67V	274	191	146	86.7	53.2	38.6	30.7	23.2	14.4	9.46	7.78	4.13
1.70V	265	187	144	86.1	52.4	38.1	30.5	23.0	14.3	9.40	7.76	4.11
1.75V	234	170	139	84.4	51.4	37.4	29.9	22.9	14.1	9.38	7.63	4.04
1.80V	210	158	131	81.9	50.2	36.8	29.5	22.5	13.8	9.17	7.55	3.97
1.85V	183	145	118	77.0	47.5	34.9	28.1	21.7	13.5	8.88	7.26	3.82

Constant Power Discharge Characteristics Unit: W (25°C, 77°F)

F.V/Time	5MIN	10MIN	15MIN	30MIN	60MIN	90MIN	2HR	3HR	5HR	8HR	10HR	20HR
1.60V	3013	2127	1654	1003	614	456	370	261	173	116	93.5	49.7
1.67V	2818	2060	1635	996	612	452	365	260	172	115	92.9	49.4
1.70V	2729	2022	1609	994	610	450	363	259	171	114	92.7	49.3
1.75V	2553	1927	1558	976	603	447	361	257	170	113	92.3	49.0
1.80V	2371	1815	1478	949	592	440	356	254	168	111	91.0	48.7
1.85V	2075	1667	1348	904	572	422	341	245	162	107	87.5	47.1

Please refer to the official site for the latest rating confirmation. URL: www.csb-battery.com

Issued: 170728

Sales Offices

日立化成能源科技股份有限公司
Hitachi Chemical Energy Technology Co., Ltd.

BUSINESS HEADQUARTERS
Tel: +886-2-2880-5600
Fax: +866-2-2888-3300

USA OFFICE
Tel: +1-817-244-7777 / 1-(800)3-CSB-USA (272872)
Fax: +1-817-244-4445

SHENZHEN OFFICE (CHINA)
Tel: +86-755-8831-6488, 8831-6775
Fax: +86-755-8831-6075

EUROPE (EMEA) OFFICE
Tel: +31(0)180-418-140
Fax: +31(0)180-418-327

SHANGHAI OFFICE (CHINA)
Tel: +86-21-5046-1622, 5046-0833
Fax: +86-21-5046-1046

TAIPEI OFFICE
Tel: +886-2-2880-5600
Fax: +866-2-2888-3300

BEIJING OFFICE (CHINA)
Tel: +86-10-5820-5336, 5820-5338
Fax: +86-10-5820-3053

Recognized under UL 1989,
and certified by ISO 9001, 14001.

